

**COULSDON**

**WEST**



**Bluebells in Mother Kitty's Shaw  
and a new cafe – see pages 10-11**

**Residents'  
Association**

**Announcing...**

**The CWRA Big Garden Wildlife Watch  
2026**

**See page 16 for details of  
our competition**

**Spring  
2026**



**Next Litter Pick**  
**Sunday 8th March**  
**Lion Green car park**  
**11 am**

## From the Chair

Spring has sprung and we are all looking forward to longer days and warmer weather. We hope that you will be interested in our Garden Watch, further details here in the newsletter. The building of the new medical centre on the Smitham site has begun. It is to be run as an NHS GP Health Centre, the provider being Keston Medical Practice, who run the GP service at Purley Memorial Hospital.

Many people have been experiencing problems with postal deliveries. Royal Mail says this is due to sickness and shortage of staff. It is possible to collect post from the sorting office (at the back of the post office). The office is open Mon-Fri 8-10, and Saturday 8-12. You need to take photo ID. Or you can try the Royal Mail Complaints number: 03457 740740.

Our next litter pick is on Sunday 8 March. Meet at the Lion Green Road car park 11am. All equipment provided. We pick litter for an hour, do come and help, it's quite a sociable activity and benefits the community.

The defibrillator, sponsored by CWRA, located outside The Smugglers Inn in Chipstead Valley Road, has been accessed 12 times since January 2023. It has not been used on anyone yet, but the unlock code has been given out in response to 999 calls.

Remember it is the Croydon Council and Mayoral election on Thursday 7 May 2026. Councillor Mario Creatura is standing down. We would like to thank him for all the work he has done in Coulsdon. Cllr Nikhil Sherine Thampi from Old Coulsdon lives on Cane Hill, and has been selected as Mario's successor.

I am very grateful for the support from the current committee members, but we are always looking for more members. We have 10 meetings a year, and it is not such an arduous task, and you will be supporting the local community.

Please get in touch if you feel you could help, via [info@thecwra.co.uk](mailto:info@thecwra.co.uk)

We would also be grateful for help with delivering the newsletters, four times each year. Let me know if you could assist with this.

**Jennifer**

## Thank You, Kind Coulsdon Residents

Thank you, kind Coulsdon residents, for your helpfulness to me in the last thirty years as I have suffered with mobility problems.

Using a manual wheelchair whenever I go out since 2007, I have increasingly enjoyed your help. Sometimes, it's when I've asked for it, but most often your help is offered spontaneously as I try to negotiate uphill slopes, narrow or stepped doorways, manage bulky shopping or access buses and trains.

When I'm unable to go out, my phone is indispensable for contacting friends to handle my errands – like shopping, fetching medications and posting letters.

Although generations of my family have lived in Coulsdon since the 1890s, I have no relatives near me today, and I'm aware that I'm not alone in that. Coulsdon has such friendly, caring people and I am glad to see you, dear readers, and enjoy a conversation.

It's been a pleasure to have served on the CWRA Executive Committee since 1981, in order to give something back to the community.

Thank you all!

Peter Appleford

PS A word of advice:

keep looking both ways before  
and during crossing the road!



# Who's Who?

## Your CWRA Committee

Jennifer Sturdy  
Richard Walker  
Bill Kilvington  
Julian Roche

Chair  
Vice Chair  
Treasurer  
Secretary

Newsletter Editor  
Planning, website  
Ecology

Peter Appleford  
Durgesh Vyas  
Keith Watkins

Committee member  
Committee member  
Committee member

Transport

## Supported by

Yvonne Walker  
Paul Ford  
Dave Mott

Membership  
Social Media

General email:

[info@thecwra.co.uk](mailto:info@thecwra.co.uk)

Website:

[www.thecwra.co.uk](http://www.thecwra.co.uk)

## Our Elected Representatives

### Local Councillors

Mario Creatura  
Ian Parker  
Luke Shortland

[mario.creatura@croydon.gov.uk](mailto:mario.creatura@croydon.gov.uk)  
[ian.parker@croydon.gov.uk](mailto:ian.parker@croydon.gov.uk)  
[luke.shortland@croydon.gov.uk](mailto:luke.shortland@croydon.gov.uk)

### Executive Mayor of Croydon

Jason Perry

[mayor@croydon.gov.uk](mailto:mayor@croydon.gov.uk)

### MP for Croydon South

Chris Philp

[chris.philp.mp@parliament.uk](mailto:chris.philp.mp@parliament.uk)

### London Assembly Member for Sutton and Croydon

Neil Garratt

[neil.garratt@london.gov.uk](mailto:neil.garratt@london.gov.uk)

## Disclaimer:

The views expressed in this newsletter are personal views of the contributors, and do not indicate endorsement, or otherwise, by any of the current CWRA committee.



# AUTO-FIX

ESTABLISHED 1991

MOT TESTING (BY APPOINTMENT)  
SERVICING & MECHANICAL REPAIRS ✕ DIAGNOSTICS  
BRAKES AND CLUTCHES ✕ TYRES & EXHAUSTS

224 BRIGHTON ROAD ✕ COULSDON ✕ SURREY CR5 2NF  
Tel: 020 8763 2229 ✕ Email: [autofix@ymail.com](mailto:autofix@ymail.com)  
[www.autofixcoulsdon.co.uk](http://www.autofixcoulsdon.co.uk)



## Membership

If you haven't already done so, why not join us?  
Membership is still only £3 per household per year.

If you do not already pay by standing order, read on...

Please consider setting up a standing order, details below.  
For new members, send us your money by bank transfer or standing order using these details:

**Account name:** Coulsdon West Residents Association  
**Account type:** Business  
**Sort code:** 20-24-61 **Account number:** 10293482  
**Reference:** *house number, space, postcode, e.g. 47 CR5 3DH*

Please then email your name and address, noting the time and date of your payment, to: [info@thecwra.co.uk](mailto:info@thecwra.co.uk)

## Whose Responsibility Is It?

For most people in this country, owning a gun is against the law and yet guns can be obtained if you know where to look. Knives of a frightening variety are readily available online. We are repeatedly shown evidence that organised crime can readily purchase devices which bypass vehicle security systems and enable them to be stolen almost at will and with apparent ease. Who is manufacturing and selling such devices?

The maximum speed limit on our motorways is 70 mph; on all other roads it can be considerably less. Why then, do manufacturers consistently produce vehicles which can reach speeds far in excess of 100mph? Quote from well-known car magazine test: ***“with Boost mode activated, the car produces 641 bhp and 790Nm of torque. Combine that with the Launch Control and the GV60 Magma will do 0-62 in 3.4 seconds and rocket to 124 mph in just 10.9 seconds. Top speed stands at 164mph”.***

This may be an extreme example, but it was said to be a rival for certain Tesla and Porsche models.

Last year Australia took the decision to ban social media access to children of certain age groups. This measure was introduced in an effort to protect them from unsuitable material which could be accessed via modern mobile phones. So fierce is the competition in this market that manufacturers compete to provide ever more sophisticated models, enabling users to access all manner of things including the unsuitable/harmful material. Smart Glasses are another recent development capable of criminal exploitation.

At a time when we are trying to fight crime and make a safer world for our children in the future, all the above examples do little to further those objectives. So, my question is, do the manufacturers and sellers of such goods carry any responsibility for making them available to the public? They seem to have displayed no hint of conscience so far. Taking the lead from Australia, do we need stringent legislation, in many areas, to curb the excesses of ambitious manufacturers?

**Julian.**

Join Neighbourhood Watch. It's free.

# desresblinds



**Customer service and quality guaranteed  
by established, local family business**

**We have a dedicated specialist**  
*(each of whom has worked for us for years)*  
**for each of the products below:**

- All types of window blinds
- Conservatory roof blinds ■ Shutters
- Awnings/Canopies ■ Curtains
- Window Film

**Call or email us for a brochure or appointment**

**We also invite you to look at our website**

**tel/fax: 020 8651 3569**

**mobile: 07961 827 917**

**email: [info@desresblinds.co.uk](mailto:info@desresblinds.co.uk)**

**web: [www.desresblinds.co.uk](http://www.desresblinds.co.uk)**

**ESTABLISHED, PROFESSIONAL,  
LOCAL, TRUSTED, APPROACHABLE**

# Streeter Marshall

Established in Croydon since 1790.

- ✓ **Wills & Powers of Attorney**
- ✓ **Residential Conveyancing**
- ✓ **Probate & Estates**
- ✓ **Notarial Work**

## **Coulsdon Office**

144-146 Brighton Road,  
Coulsdon CR5 2ND  
01737 652490

Offices also in Purley, Croydon,  
Warlingham & Oxted  
[www.streetermarshall.com](http://www.streetermarshall.com)



**Streeter  
Marshall**  
SOLICITORS  
& NOTARIES

# Your local MP and Councillors

An update on the Coulsdon Medical Centre, by **Chris Philp MP**.

I am as disappointed as local residents at the delays and I have been pressing our local NHS to get on with the development as fast as possible. It seems that the existing boundary wall between the new centre and the nursery school playground will need some strengthening work, which had been overlooked.

Soon, we can all look forward to road closures finishing, once this work, and the access road to the site from Woodcote Grove Road, is completed.

Despite this delay, I am pleased to see things continuing to move forward, and I will be visiting soon to see progress and the specific services that can be provided here as a GP Plus arrangement.

I will send round more details as I get them and, as ever, if there is anything I can do to be of assistance, please do not hesitate to get in touch via:

**[chris.philp.mp@parliament.uk](mailto:chris.philp.mp@parliament.uk)**

## **Councillors' Report**

### **Anti-social Car Meets at the Ullswater Estate**

We can report that increased police patrols and more visible policing have resulted in no recent reports of such activity to either councillors or to the police.

We are pushing for speed bumps to be installed to act as a further deterrent, and the council's highways officers are consulting on the proposals.

### **Purley Pool – another major step forward**

Plans for the long-awaited Purley Pool have cleared another major milestone. Following approval by Croydon Council, the Greater London Authority has now confirmed it will not intervene in the application or direct refusal.

### **Council Budget update – what it means for Coulsdon**

Croydon's Budget will be voted on at Budget Council on 25 February. The proposals continue the work of stabilising the council's finances. For Coulsdon, this means a continued focus on clean streets, community safety and protecting essential local services.

### **So long, Mario – thank you for 12 years of service**

After 12 years of dedicated service, Cllr Mario Creatura is stepping down at the elections on 7th May. His commitment to Coulsdon and its residents has been constant, and he leaves the role proud of what has been achieved.

**Surgery dates** (outside Aldi 11:00 – noon):

**14th March, 11th April.**

All contact details on Who's Who, page 4.

# Rickman Hill Park News

You may have noticed some developments at Rickman Hill Park recently. New benches have been installed, engraved on the side FoRHP. (Friends of Rickman Hill Park). In addition, oak saplings have been planted along the side of the park, and other saplings in the small coppice on the far side of the park. Volunteers have done a great deal of tidying up and litter picking, including in the piece of ancient woodland, Mother Kitty's Shaw, on the right as you enter the park. We have also planted new saplings there. Soon you should be able to see the bluebells. The opening of Loretta's Café promises to be a great attraction.

Even if you don't live too near Rickman Hill, please take the time to visit: it has a lovely children's playground and the whole area is more spacious than you might imagine.

**Jennifer**



## Rickman Hill Park – New Cafe Open

After a long period of closure, the park café is reopening under new management. **Loretta's Café** is getting ready to welcome visitors.

Loretta, a local resident and professional baker, has taken over the space and brought her passion with her. She already runs a successful cake business, creating bespoke cakes for special occasions and hosting cake-decorating classes. She is now bringing those skills into the park with a vision of creating a welcoming community hub.

Loretta's Café will serve quality coffee, homemade cakes and light lunches, with both indoor and outdoor seating available.

The venue will also be available to host private functions.

Opening times will vary initially while demand is assessed.

Keep an eye out, spread the word, and get ready to support this lovely new local venture !

# JJC Compu-Techies

Your Local **COMPUTER REPAIR** Men

Fast & Free **CALL OUT SERVICE**

- Windows 11 setup
- PC running slow
- Lost data & pictures recovered
- Virus, tracker & spyware removal
- New PC setup
- PC MOT & Health check
- Prompt reliable technicians
- No hidden charges

**We come to You**



**Call us now**

**020 8654 6541**

Est. 1998

[www.jjc1.com](http://www.jjc1.com)



# What's On

**Coulsdon Community Partnership:** Find out more about the activities: [coulsdonpartnership.org/pages/funded-community-programs](http://coulsdonpartnership.org/pages/funded-community-programs)

**Chipstead Players:** The Wolves of Willoughby Chase: 14-18 April. Stepping Out: 28-30 May. More information: [chipsteadtheatre.com](http://chipsteadtheatre.com)

**Bourne Society:** local history society with a range of talks and other events. Full details on [bournesoc.org.uk/whats-on/](http://bournesoc.org.uk/whats-on/)

**St Andrews Church:** details 0208 676 2966 or [standrewscoulsdon.co.uk/](http://standrewscoulsdon.co.uk/)

April 2nd: 7.30 pm Liturgy of Maundy Thursday followed by Compline at 9pm.

April 3rd Good Friday:

11 am Churches Together Walk of Witness (meeting at St Aidan's)

2-3 pm at St Andrew's: The Cross of Christ, music and readings for Passiontide.

Sunday 5th Easter Day: 9.45 Festal Eucharist followed by Easter Egg Hunt

**Croydon Central Library:** Croydon Through the Lens of Charles Harrison Price. A free photographic exhibition from the beginning of the twentieth century. Until 2 May 2026. Includes photos of Coulsdon area.

Other events here: [croydon.events.mylibrary.digital/](http://croydon.events.mylibrary.digital/)

**Purley Lit:** Regular talks, see [purleylit.org.uk](http://purleylit.org.uk) for details

**Coulsdon Club:** regular events, see [www.coulsdonclub.co.uk](http://www.coulsdonclub.co.uk) for details

**National Gallery Art Trail:** Turner's The Fighting Temeraire is outside Coulsdon Sixth Form College.

**The Hive:** Coulsdon Library's community garden behind the library. Open library hours, subject to volunteer availability and the weather. Volunteers are on site on Saturdays from 10am-12pm. Accessible entrance off Railway Terrace.

## Coulsdon Library

**Hours:** Mon, Tues, Thur, Fri: 10am-6pm; Sat: 9am-5pm Closed Wed and Sun

For any event labelled **pre-booking required**, and for more details, go to [libraries.croydon.gov.uk/events](http://libraries.croydon.gov.uk/events)

## Regular free events for children:

**Rhymetime.** Thursdays 11am-11:30am. **Pre-booking required**

**Storytime.** Fridays 4pm-4:30pm. Come listen to stories being read aloud.

## Free events for adults:

**Mudlarker Alan Robson: 3 different talks in the series: Pre-booking required;** hear about, see and handle objects from the Thames.

**Talk 1: Tuesday 17th March** 10:30am-11:30am.

**Talk 2: Tuesday 21st April** from 10:30am-11:30am

**Talk 3: Tuesday 19th May** from 10:30am-11:30am

## More What's On

### More at Coulsdon Library:

**Coulsdon's local PCSO** (Police Community Support Officer) on these **Tuesdays**: 10th March, 14th April and 5th May from 11am-12pm. Come along to raise any concerns about the local area.

### Adult colouring and knit, stitch and crochet club.

**Mondays** 10:30am-12pm.

Colouring books and colour pens can be provided, but please bring in your own knitting needles, wool, crochet or stitching project.

**NEW! An additional self-run adult colouring and knit, stitch and crochet club on Saturdays** from 10am-11:30am. Details as above.

**Reading Retreat. Mondays** 1:30pm-3pm. This group welcomes people to read poetry and stories aloud.

**Monthly adult reading group: second Thursday of the month** from 2-3pm. Next meeting will be on Thursday 12th March, when Long Island by Colm Toibin will be discussed.

**Coulsdon Library welcomes donations of 500 piece puzzles.**

## Croydon Camera Club – Wratten Lecture

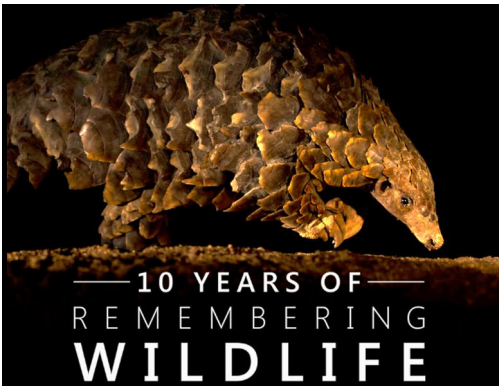
**Remembering Wildlife** is the collective name for the series of books created by British wildlife photographer Margot Raggett MBE who was prompted to take action after seeing a poached elephant in Northern Kenya in 2014.

She began asking fellow wildlife photographers if they would contribute to a fundraising book. Their response was unanimous and Remembering Elephants, by 'Wildlife Photographers United' was published in September

2016 with images donated by 65 of the world's top wildlife photographers.

2026 sees 10 years of the Remembering Wildlife series and Croydon Camera Club is delighted that Margot Raggett is presenting this year's Wratten Lecture **on 11 March at 8pm Shirley Methodist Hall: £8 on the door.**

Visit [croydoncameraclub.org.uk/](http://croydoncameraclub.org.uk/)





**PUZZLE**  
KITCHENS | BEDROOMS

STARTING FROM  
AS LITTLE AS £8,000

We design, supply & install affordable and quality kitchens



Contact Rajan on 020 3441 1448  
[www.puzzlekitchens.co.uk](http://www.puzzlekitchens.co.uk)



**SHOWROOM:**  
35 Chipstead Valley Road, Coulsdon, CR5 2RB

# Transport

**Trains:** There are no planned changes to the train times in Coulsdon at the next timetable change in May 2026.

East Surrey Transport Committee is still campaigning to restore the peak hour Victoria services from Tattenham Corner and improve the Sunday services on the Tattenham Corner line.

**Please support this campaign by contacting GTR customer services  
GTRPublicAffairs@gtrailway.com  
and copying it to Chris Philp MP [chris.philp.mp@parliament.uk](mailto:chris.philp.mp@parliament.uk)**

**Coulsdon South:** bridge repairs/strengthening - the shelf brackets have been installed, and are awaiting the steel beams to sit on them.

**The Community Garden** at Coulsdon South is now open with seating, flower planters, posters and the Coulsdon Art Trail Finial dedicated to the Navigators who built the railway by hand.

**Station Stats for 2025** – with comparison to pre-Covid numbers

Coulsdon South	1,959,570	106%,
Woodmansterne	126,744	50%,
Reedham	105,708	46%,
Coulsdon Town	97,562	46%

**Buses:** The first electric buses arrived in Coulsdon on the 466 in December followed by the 405 in January. These routes will be followed by the 60 and 412.

**Bus stats for 2025.** Nationally there is a 1% increase in usage, while in London there is a drop of 1%. Locally the routes fared better, all showing an increase against the previous year:

<b>60:</b>	6,218,371	+10.48 %	<b>466:</b>	3,883,938	+12.29%
<b>405:</b>	1,585,000	+14.12%	<b>463:</b>	1,167,132	+14.28%
<b>166:</b>	1,084,155	+15.05%	<b>434:</b>	236,788	+8.56%
<b>404:</b>	2,10,158	+13.43%	<b>N68:</b>	396,604	+15.38%

**Rail 200 is a celebration of 200 years of Railways in Britain**, and there is a free touring exhibition (on a train) called '**Inspiration**'. This will visit Tattenham Corner station on Monday 9th to Wednesday 11th March 2026.

Tickets must be pre-booked from <https://railway200.co.uk/inspiration/>

**Steam Trains:** The only steam train scheduled in the near future is the Sussex Belle to Eastbourne with Black 5 loco on **Wednesday 15th April**. Timings have not yet been published, but it normally travels down mid-morning and back in the evening.

To check times visit [railadvent.co.uk/steam-locomotives-on-the-mainline](http://railadvent.co.uk/steam-locomotives-on-the-mainline)

On the day you can check how it is running on Realtimetrains:

[realtimetrains.co.uk/search/detailed/gb-nr:CDS/2026-04-15/1100](http://realtimetrains.co.uk/search/detailed/gb-nr:CDS/2026-04-15/1100)

# CWRA Big Garden Wildlife Watch 2026

## (inspired by the RSPB) 3rd – 12th April

As a residents' association we often comment upon our wealth of wildlife and open spaces; regular readers will also be aware that we work with Greenspace Information for Greater London (GiGL) - to record as much wildlife in our area as possible. This year, inspired by the RSPB Big Garden Birdwatch, we thought we would try something a little different.

Over the Easter weekend and the following week, we are asking residents to actively record as much of the wildlife in their gardens as possible, be it a large fox, tiny beetle, parakeet or a robin. We know that not everyone has their own garden, so any green space in the immediate area will do.

We have chosen the Easter week for two reasons – firstly, schools will have broken up and it's a great opportunity to get children outdoors and rooting around in the garden or nearest green space (we're all going on a bug hunt!). Secondly, those of us lucky enough to have ponds in our gardens or nearby water courses may well spot frogs, toads and newts as they will be in breeding mode. If you have a compost bin, you may even see early slow worms or even a grass snake nearby.

Don't worry if you're not sure what it is you're seeing, get a photo on your phone and we'll try to identify it – you could also try out Google Lens if you have an Android device or Visual Intelligence for iOS devices.

### **What do I need to record?**

1. What is it? (If you know; but if not, send us a photo).
  - a. How many.
  - b. Life stage – adult, baby, eggs (e.g. frog or toad spawn).
2. When did I see it? (Date and time of day).
3. Where did I see it? Ideally a grid reference from Google maps, but don't worry just your address if it's in your garden will do.
4. Who saw it? – We want your permission to submit your name and the location to GiGL and for them to use any photographs you have taken.

# Big Garden Wildlife Watch Competition

## How do I share what I've seen... and enter the competition?

Whilst you can submit your sightings directly to GiGL using the this link: [gigl.org.uk/submit-records](http://gigl.org.uk/submit-records) (which is on our website), we want to encourage reporting, and so CWRA are offering two **£25 Amazon Tokens** for the individual submitting the most records over the week: one for a winner under 16 years old and another for the rest.

Email us [info@thecwra.co.uk](mailto:info@thecwra.co.uk)

Some sample wildlife pictures featuring local badgers, a fox, a deer and slow worms:



## Resuscitation - L'Inconnue de la Seine

People have been trying to bring others back to life for a very long time. As far back as the 18th century, doctors and rescuers experimented with all sorts of ideas to restart breathing and the heart, from rubbing the chest to blowing air into the lungs. In 1740, the Paris Academy of Sciences even recommended mouth-to-mouth breathing for drowning victims, which was quite a bold idea at the time. Around the same time, using bellows to blow tobacco smoke into someone's rectum (apparently to stimulate breathing) was tried – so called tobacco enemas! This may have been the origin of the phrase 'to blow smoke into your bum (polite version)' when being lied to.

For many years, though, resuscitation was hit and miss. It wasn't until the 1950s that researchers proved mouth-to-mouth breathing was a safe and effective way to get oxygen into the body. Around the same time, doctors discovered that firm, rhythmic pressure on the chest could keep blood circulating when the heart had stopped.

These two discoveries came together in 1960 to create what we now know as CPR, although nowadays mouth to mouth, or 'rescue breaths' are only recommended if you are confident in the technique. Otherwise, just rhythmic chest compressions at about 100-120 per minute are sufficient. More experienced people would give 30 chest compressions followed by 2 rescue breaths.

If you have ever received formal training in CPR it is likely that you would have practised on a female mannikin, universally known as Resusci Annie; what you probably don't know is that her face is that of an unidentified young woman whose drowned body was pulled from the river Seine in Paris in 1900.

It was common at the time for a death mask to be made of unidentified victims of drowning, in the hope that their family might identify them. In 1960 the Laerdal company used her death mask for the face of its new resuscitation training device.



**Bill**

## Resuscitation Training

CWRA organised the public defibrillator machine located outside the Smugglers Inn on Chipstead Valley Road three years ago, and on the same theme - 'keeping people alive' - we would like to organise professional resuscitation training to small groups. This will be at a level suitable for any member of the public, and the cost would be borne by the association.

To gauge interest, we invite you to register your interest by emailing us at [info@thecwra.co.uk](mailto:info@thecwra.co.uk) with **CPR Training** in the subject line.

In the meantime, you can access online training and information from the British Heart Foundation at [bhf.org.uk/how-you-can-help/how-to-save-a-life/how-to-do-cpr/learn-cpr-in-15-minutes](http://bhf.org.uk/how-you-can-help/how-to-save-a-life/how-to-do-cpr/learn-cpr-in-15-minutes)

## Planning Rugby!

Not much to report on the planning front, so I'll revert to rugby!

The men's 6-nations competition (M6N) started in a promising way for England a few weeks ago, with a strong win against Wales. France (the holders) look to be more formidable than ever, making their win over Ireland look easy. Italy got a win under their belt against a mediocre-looking Scotland side.

Note: "commentator's curse" - by the time you are reading this newsletter, I expect we'll have lost the Calcutta cup match!

Look out for the women's competition; the Red Roses – that's the England women's side – are the current holders of both the women's 6 nations, and the Rugby World Cup. This year's W6N starts on Saturday, 11th April, with all six sides playing. It promises to be another great festival of rugby with the Red Roses being the starting price favourites for the title.

When the Calcutta (Rugby) Football Club was disbanded in 1878, the proceeds of 270 silver rupees were melted down, and Indian craftsmen made this superb trophy. First played for between England and Scotland at Raeburn Place, Edinburgh, it is the oldest trophy contested between any two international rugby union teams.

(Following an 'incident' with the original cup, a new replica was made.)



The Calcutta Cup.  
Image courtesy of the Raeburn Place Foundation

JOY WILKINSON'S

# THE SWEET SCIENCE OF BRUISING

AN AMATEUR THEATRE PRODUCTION BY ARRANGEMENT WITH NICK HERN BOOKS

COULSDON COMMUNITY CENTRE  
CHIPSTEAD VALLEY ROAD CR5 3BE

THEATRE WORKSHOP  
COULSDON

MARCH  
21, 25, 26, 27, 28  
AT 7.45 PM

MARCH  
22, 28, 29  
AT 3.00 PM



HELD BACK, HELD DOWN  
NOW THEY'RE COMING OUT FIGHTING!

BOX OFFICE  
TWCULSDON.ORG.UK  
TICKETS £12  
CONCESSIONS £9



## Coulston Auto Parts & Accessories

We look after All Makes, Models & Ages of All Vehicles

We stock all major brands and offer a special order service for items not held in stock.

We supply and fit our wiper blades, batteries & bulbs free of charge at our shop (T&C's Apply)

Our Stock Includes: Platinum Batteries, Mintex, BOSCH, Autoglym, Castrol, Fram, Blue Print, Pagid.....and many more

[www.coulstonautos.co.uk](http://www.coulstonautos.co.uk)

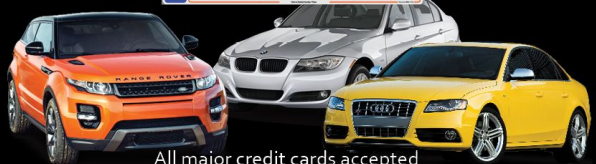
020 8668 7878

177-179 Brighton Road  
Coulston CR5 2NH



Find us on **facebook**  
Coulston Auto Parts & Accessories

GB YOUR REG



All major credit cards accepted